



**Berkshire**

ENGINEERED CLEAN

CONTAMINATION CONTROL

**PRODUCT**  
**CATALOG**

MOP SYSTEMS

| CEILING

| WALLS

| FLOORS

| RABS



*AEROSPACE & DEFENSE*



*MICROELECTRONICS*



*AUTOMOTIVE*



*PHARMACEUTICAL*



*OPTICS*



*HEALTHCARE*



*PRINT*



*MEDICAL DEVICE*



*UNIVERSITY / RESEARCH*



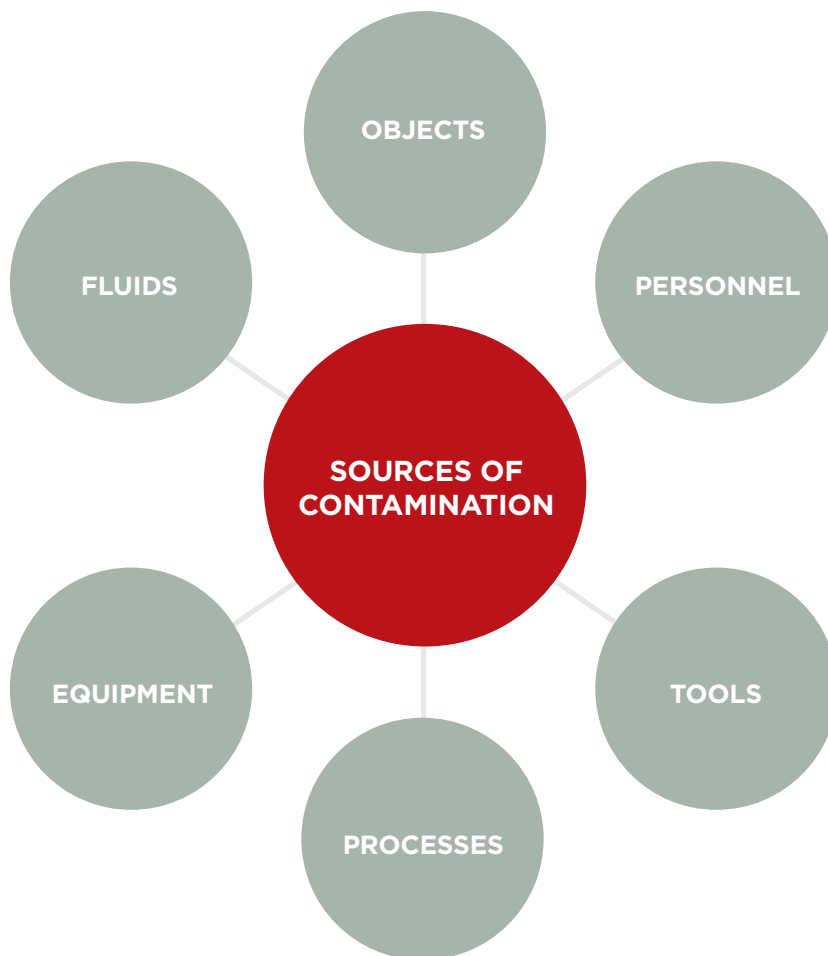
*FOOD & BEVERAGE*

**Berkshire**  
ENGINEERED CLEAN

[BERKSHIRE.COM](http://BERKSHIRE.COM)

# CLEANROOM CONTAMINATION FUNDAMENTALS

WHAT YOU CAN'T SEE CAN HURT YOU



## WHAT CAN YOU DO?

Follow a validated cleaning protocol with written SOPs

Choose and use qualified wipers and other cleanroom cleaning supplies

## INVISIBLE & VISIBLE CONTAMINATION

SKIN PARTICLES

FIBERS

DUST

GREASE

BACTERIA

VIRUSES

METALS

FUNGI

NVRS

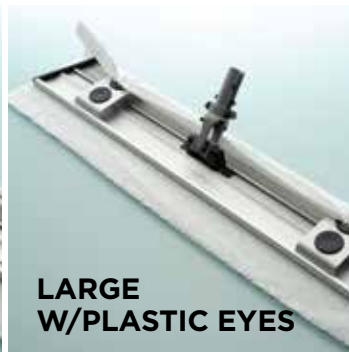
IONS

FILMS

### REMEMBER

Inappropriate cleanroom supplies can be a source of contamination, not a solution for controlling contamination

# BCR® MOP SELECTION GUIDE



	STRING	CHOICE®	DOUBLE SIDED	ERGONOMIC	LARGE W/ SPRINGS	LARGE W/ PLASTIC EYES	SMALL W/ PLASTIC EYES	EASYCLEAN® 360
AUTOCLAVABLE	●	●	●	●	●	●	●	●
FLOORS	●	●	●	●	●	●	●	
WALLS			●	●	●	●	●	
CEILINGS			●	●	●	●	●	
RABS								●
ISOLATORS								●
CACI/CLASS II BSC								●
LARGE AREAS	●	●	●	●	●	●		
SMALL AREAS			●	●	●	●	●	●
UNDER EQUIPMENT			●	●	●	●	●	
WET CLEANING	●	●	●	●	●	●	●	●
DRY CLEANING			●	●	●	●	●	●

# CHOICE® MOPS & ACCESSORIES

## CHOICE® MicroFiber Mop Head

Microfibers are tiny fibers that have been split to produce ultra-fine fibers estimated to be at least 1/16” the size of a human hair. When knitted together these fibers create a surface area covered with millions of spaces between the fibers to trap moisture, dirt and debris. This technology allows for the dirt and liquids to be “picked up” rather than being pushed around.

### Features and Advantages

- White 88% polyester/12% nylon microfiber string mop with blue headband and tailband
- Microfiber yarns attract and trap dirt and debris
- Terry knit structure enhances absorbency to increase efficiency
- Tubular knit construction with sewn head and tail bands provides added durability
- Lot number assures traceability
- Autoclavable

SKU	PACKAGING	MOPS/PACK	MOPS/CASE
CHMFM.24	INDIVIDUALLY WRAPPED	1	24

## CHOICE® Mop Handle & Clamp

Economical CHOICE® lightweight mop handle & clamp accommodates most size string and loop mop heads.

### Handle: Features and Advantages

- Anodized aluminum handle with blue polypropylene hand grip
- Fixed length at 56 inches (140cm)
- Easily connects to clamp
- Corrosion and chemical resistant
- Not autoclavable

### Clamp: Features and Advantages

- Blue polypropylene mop clamp
- Latch-style swing-away bar for quick and easy mophead changes
- Easily connects to handle
- Corrosion and chemical resistant
- Autoclavable

PRODUCT	SKU	PACKAGING	MOPS/HANDLES/ CASE
CHOICE MOP HANDLE & CLAMP SET	CHMH.SET.1	1 HANDLE & 1 CLAMP	1

### DID YOU KNOW ?

The mop head can be relaundered and re-used. Specific laundry instructions can be found on Product Information Sheets located at [berkshire.com/shop.html](http://berkshire.com/shop.html)



# BCR® CLEANROOM LOOPED STRING MOP SYSTEM

## Cleanroom Looped String Mop Heads

Looped-end-fan-tail construction to minimize particle generation

### BCR® Mop 1

Nonwoven polyester — Disposable

This is an absorbent, economical, unlaundered soft mop designed for both the easy removal of contamination from floors and for the distribution of disinfectants.

PRODUCT	SKU	MOP/PACK	MOPS/CASE
BCR® MOP 1	BCM.1.12	1	12



### BCR® Mop 4

100% knitted polyester — Relaunderable

Laundered and packaged in an ISO Class 4 cleanroom, this mop has low particulates and fibers. It has excellent chemical and abrasion resistance, with a lot number on each pack ensuring traceability. Available gamma irradiated.

PRODUCT	SKU	MOP/PACK	MOPS/CASE
BCR® MOP 4	BCM.4.12	1	12
BCR® MOP 4	BCM.4IR.12	1	12

## Cleanroom Looped String Mop Wringer, Cart and Buckets - Fully Autoclavable

### Composition and Technology

- The Cleanroom Cart is made of high quality stainless steel and is fully autoclavable
- Locking casters provide stability
- Wringer is made of durable plastic
- Ergonomically designed handle serves as a rest for the mop handle and makes the cart easy to maneuver in tight production areas
- Two 20 liter polypropylene buckets are color coded blue and red to differentiate between clean and dirty solutions

*\*Internal bucket graduations help insure correct mixing of cleaning and disinfecting solutions*

PRODUCT	SKU	QTY PER CASE
STAINLESS STEEL MOP CART WITH BUCKETS	BCRMOPCART1	1
MOP WRINGER	BCRSTRWRINGER1	1



## CLEANROOM STRING AND LOOP MOP HANDLE & CLAMP

### Handle: Features and Advantages

- Anodized aluminum handle
- Fixed length of 56" (140cm)
- Lightweight
- Easily connects to clamp
- Corrosion and chemical resistant
- Not Autoclavable

### Clamp: Features and Advantages

- Blue polypropylene mop clamp
- Latch-style swing-away bar for quick and easy mophead changes
- Easily connects to handle
- Autoclavable
- Corrosion and chemical resistant

PRODUCT	SKU	PACKAGING	MOPS/HANDLES/ CASE
CHOICE MOP HANDLE & CLAMP SET	CHMH.SET.1	1 HANDLE & 1 CLAMP	1



### DID YOU KNOW ?

Certificates of Irradiation are available 24/7 on [berkshire.shop.html](http://berkshire.shop.html) for BCM.4IR.12

# EASYCLEAN® 360 ISOLATOR CLEANING SYSTEM

## ISOLATOR CLEANING TOOL



Efficient cleaning of compounding isolators, biological safety cabinets, laminar flow hoods and other mini-environments is critical to the quality and purity of compounded products. The EasyClean® 360° System includes a lightweight, maneuverable cleaning tool along with easy-to-use laundered polyester knit covers.

- Durable, mirror finish, stainless steel mop head swivels 360° for easy maneuverability
- Head can be locked for 180° swivel when desired
- 4x7" (10x18cm) triangular head shape allows improved access to tight corners.
- Lightweight anodized aluminum handles provided in 2 lengths - 14" (35cm) and 24" (61cm)
- Mop head and handles can be sterilized by autoclave or gamma irradiation



### PRODUCT

EASYCLEAN® 360 ISOLATOR CLEANING TOOL

TELESCOPING ALUMINUM HANDLE

### SKU

EC360.ICT.1

### HANDLE SIZES

14" & 24" (35cm & 61cm)

### QTY PER CASE

1

BCR.T2HANDLE.1

37" - 71" (95 - 180cm)

1 (SOLD SEPARATELY)

Light weight anodized aluminum handles provided in 2 lengths — 14" (35cm) and 24" (61cm)



## EASYCLEAN® ELASTIC ICT COVERS

- 100% continuous filament knitted polyester padded covers are laundered and packaged in an ISO Class 4 cleanroom
- Recommended for use with the EasyClean® Elastic Cover
- Foam-free cushioned design ensures even surface coverage with reduced residues and contaminants
- Easy-to-install covers fits securely and stay in place during use
- Autoclavable

### PRODUCT

EASYCLEAN® ELASTIC ICT COVERS

STERILE EASYCLEAN®

### SKU

EC360.EC.6

### PACKAGING

25 ELASTIC COVERS & 1 PADDED COVER/PACK

### PACKS/CASE

6

EC360.ECST.20 ELASTIC ICT COVERS

10 ELASTIC COVERS & 1 PADDED COVER/PACK

20

## EASYCLEAN® NONWOVEN ICT COVERS

- Double-ply 55% cellulose/45% polyester
- 100% nonwoven rayon inner layer for added absorbency
- Elastic edge allows secure fit on the mop head during use
- Autoclavable
- Recommended for use in an ISO Class 5 - 8 cleanroom or EU Grade B/C/D

### PRODUCT

EASYCLEAN® NONWOVEN ICT COVERS PACK

### SKU

EC360.NW.40

### PACKAGING

5 NONWOVEN COVERS/ 4 PACKS/PACKET

### PACKS/CASE

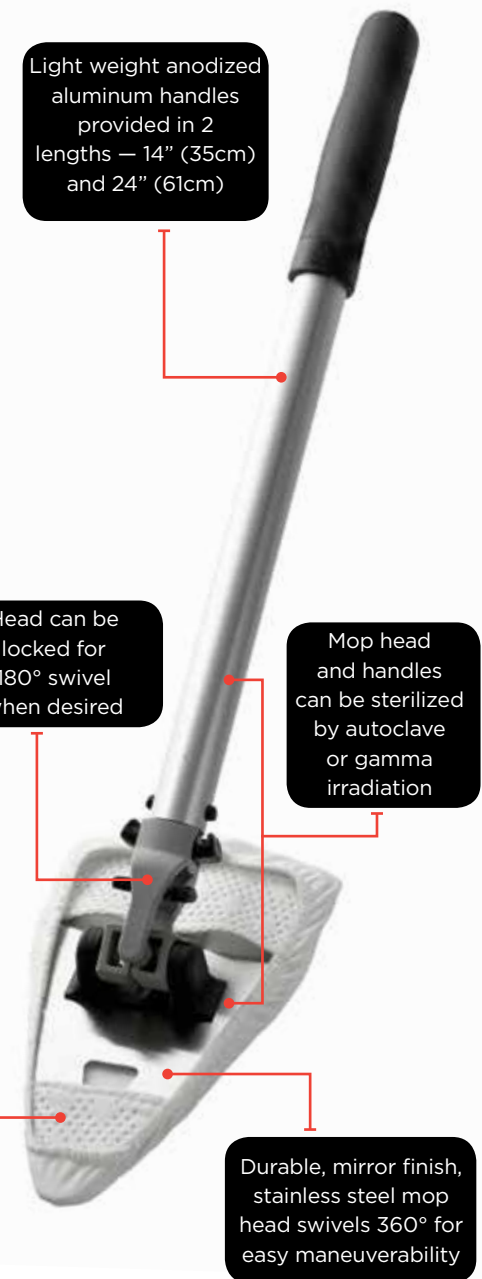
10

4x7" (10x18cm) triangular head shape allows improved access in tight corners

Durable, mirror finish, stainless steel mop head swivels 360° for easy maneuverability

Head can be locked for 180° swivel when desired

Mop head and handles can be sterilized by autoclave or gamma irradiation



# FLAT MOPS

## ERGONOMIC 16" CLEANROOM FLAT MOP SYSTEM

The ergonomic 16" Flat Mop holder is a versatile flat mop suitable for almost all application areas. Your cleanroom staff can attach mops faster and more efficiently than ever. Thanks to the cleanroom flat mops V shape, it slips smoothly into the pouches of the mop reducing bending and decreasing injury.

- Ergonomic working hand-switch opening of the holder and mop discarding while standing upright
- No touching of soiled mops when discarding
- Completely flat action for cleaning under and behind equipment

PRODUCT	SKU	SIZE	QTY PER CASE
V FLAT MOP HOLDER WITH CLIPS	BCRVSMOP10	4 X 16" (10 X 40cm)	10 V FLAT MOPS/20 CLIPS
V FLAT MOP HOLDER WITH CLIPS	BCRVSMOP1	4 X 16" (10 X 40cm)	1 V FLAT MOPS/2 CLIPS
TELESCOPING HANDLE	BCRHANDLE10	35-65" (89-165cm)	10
TELESCOPING HANDLE	BCRHANDLE1	35-65" (89-165cm)	1
V FLAT MOP CLIPS	BCRVSCIP20	N/A	20

Polypropylene grip

Fully autoclavable lightweight durable anodized aluminum telescopic handle extends from 35-65" (89-165cm)

Easy insertion of the holder into the pouches of the mop cover thanks to the V shape

## CLEANROOM ERGONOMIC FLAT MOP COVERS

### Nonwoven Cover

- 68 gsm polyester/cellulose outer cover
- 100% rayon nonwoven inner layer provides superior absorbency
- High tear strength, individually wrapped — autoclavable



PRODUCT	SKU	SIZE	COVERS/PACK	PACKS/CASE
V MOP NONWOVEN COVER	FMC4NW20	4.5 X 15" (11 X 38cm)	10	20

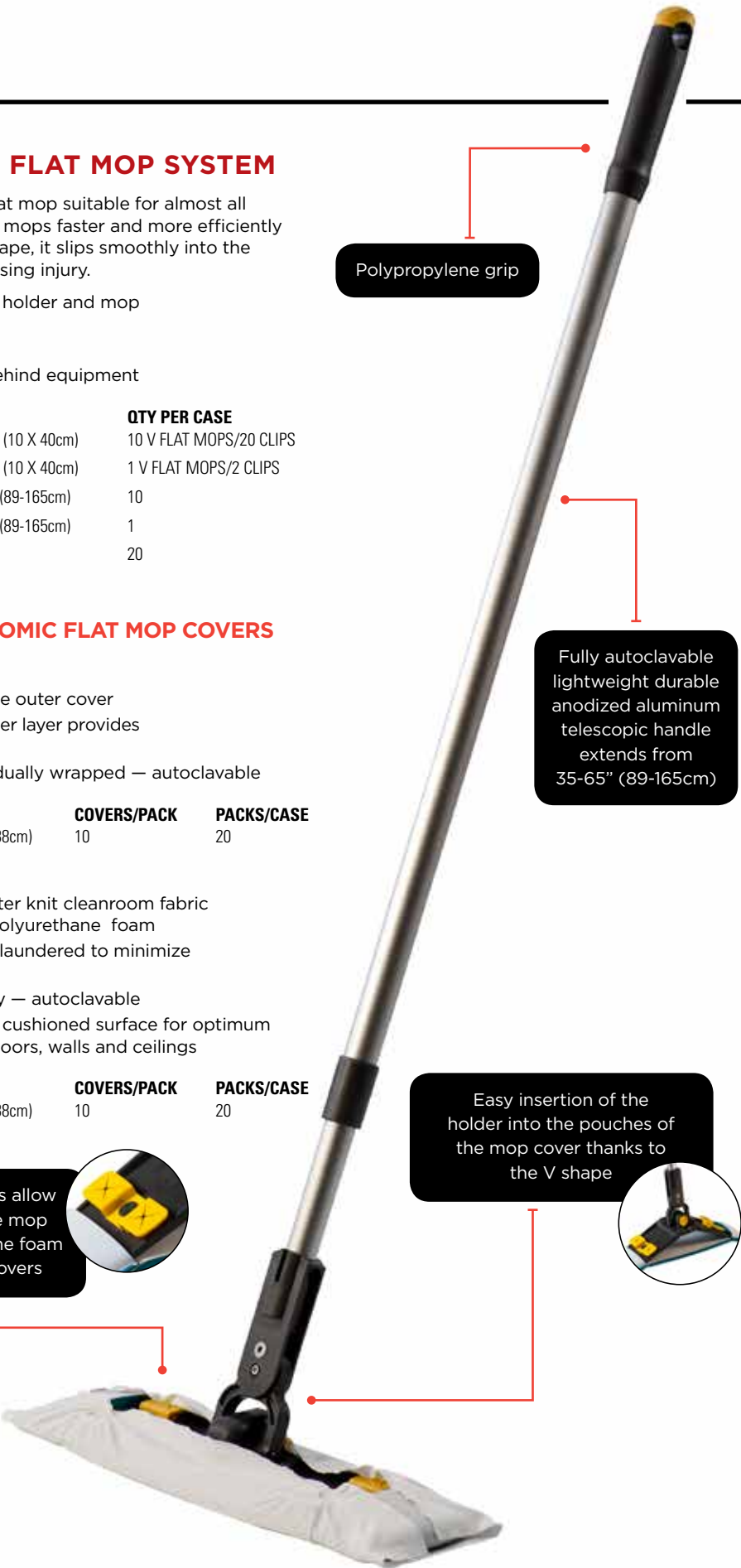
### Foam Cover

- Abrasion resistant polyester knit cleanroom fabric laminated to absorbent polyurethane foam
- Laser cut and cleanroom laundered to minimize fiber and particle release
- High absorbency capacity — autoclavable
- 10mm thickness provides cushioned surface for optimum conformance to uneven floors, walls and ceilings



PRODUCT	SKU	SIZE	COVERS/PACK	PACKS/CASE
V MOP FOAM COVER	FMC6LF12	4.5 X 15" (11 X 38cm)	10	20

Detachable wiper clips allow the use of disposable mop wipers in addition to the foam or nonwoven mop covers



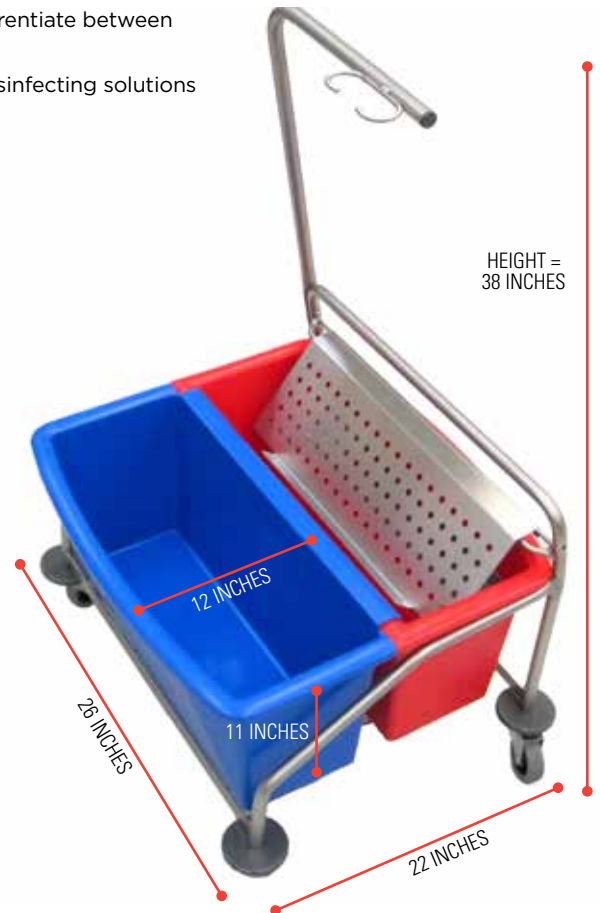


## ERGONOMIC FLAT MOP WRINGER, SIEVE, CART AND BUCKETS

### Composition and Technology

- The Cleanroom Mop Cart is made of high quality stainless steel and is fully autoclavable.
- Locking casters provide stability during use.
- Wringer is made of high quality stainless steel.
- Ergonomically designed handle serves as a rest for the mop handle and makes the cart easy to maneuver in tight production areas.
- Two 20 liter polypropylene buckets are color coded blue and red to differentiate between clean and dirty solutions.
- Internal bucket graduations help insure correct mixing of cleaning and disinfecting solutions

PRODUCT	SKU	QTY PER CS	PKS/CS
STAINLESS STEEL MOP CART WITH BUCKETS — 2, 20 LITER BUCKETS, BLUE, RED	BCRMOPCART1	1	1
STAINLESS STEEL V FLAT MOP WRINGER	BCRVSWRINGER1	1	1
STAINLESS STEEL V FLAT MOP SIEVE	BCRFMSIEVE1	1	1



## AUTOCLAVABLE CLEANROOM MOP WIPERS

	SKU	SIZE	SHEETS/PACK	PACKS/CASE
<b>Durx® 670</b> Nonwoven, 45% polyester/55% cellulose blend	DR670101810	10 X 18" (25 X 46cm)	100	10
<b>MicroSeal®-VP</b> Sealed edge, 100% knitted polyester, laundered	MSVP1018B10	10 X 18" (25 X 46cm)	50 (BULK)	10
<b>MicroSeal SuperSorb® Lite</b> Sealed edge, 2-ply, 100% knitted polyester, laundered	SSLT1018B10	10 X 18" (25 X 46cm)	25 (BULK)	10
<b>MicroPolx® 2750</b> Polyester/nylon, microfiber knitted	MPX2705101810	10 X 18" (25 X 46cm)	50	10

## DOUBLE SIDED 16" CLEANROOM FLAT MOPPING SYSTEM

The Double Sided Flat Mop holder's unique design allows operators to clean approximately twice the surface area of a conventional flat mop before changing or re-saturating the mop head, improving cleaning efficiency and reducing cleaning time.



### CLEANROOM DOUBLE SIDED FLAT MOP HOLDER

- Attachment and removal of the mop covers without bending
- Extremely maneuverable with a 360° swiveling head and flat profile-ideal for cleaning under and around production equipment
- Durable, autoclavable plastic
- Double the surface coverage of conventional flat mopping systems
- Edge mounted handle design perfect for cleaning baseboards



### CLEANROOM FLAT MOP TELESCOPING HANDLE

- Durable anodized aluminum with polypropylene grip
- Fully autoclavable, polypropylene grip, lightweight durable anodized aluminum telescopic handle extends from 35 - 65" (89-165cm)

PRODUCT	SKU	SIZE	QTY PER CASE
DOUBLE SIDED MOP HOLDER	BCRDSTMOP10	4 X 16" (10 X 40cm)	10
DOUBLE SIDED MOP HOLDER	BCRDSTMOP1	4 X 16" (10 X 40cm)	1
TELESCOPING HANDLE	BCRHANDLE10	35-65" (89-165cm)	10
TELESCOPING HANDLE	BCRHANDLE1	35-65" (89-165cm)	1

## CLEANROOM DOUBLE SIDED FLAT MOP WRINGER CART AND BUCKETS - FULLY AUTOCLAVABLE

### Composition and Technology

- The Cleanroom Mop Cart is made of high quality stainless steel
- Locking casters provide stability
- Wringer is made of durable plastic
- Ergonomically designed handle serves as a rest for the mop handle and makes the cart easy to maneuver in tight production areas
- Two 20 liter polypropylene buckets are color coded blue and red to differentiate between clean and dirty solutions
- Internal bucket graduations help insure correct mixing of cleaning and disinfecting solutions



PRODUCT	SKU	QTY PER CASE
STAINLESS STEEL MOP CART WITH BUCKETS	BCRMOPCART1	1
DS FLAT MOP WRINGER	BCRDSWRINGER1	1

**PARTICLES ON SURFACES: CLEANING FLOORS & WALLS**



## CLEANROOM DOUBLE SIDED FLAT MOP COVERS



### Double Sided Mop Nonwoven Cover

- 68 gsm polyester/cellulose outer cover
  - 100% rayon nonwoven inner layer provides superior absorbency
  - High tear strength
  - Each cover is individually wrapped
- \*Autoclavable

SKU	SIZE	COVERS/ PACK	PACKS/ CASE
FMC5NW24	10 X 18" (25 X 46cm)	4	24



### Double Sided Mop Foam Cover

- Abrasion resistant polyester knit cleanroom fabric laminated to absorbent polyurethane foam
  - Laser cut and cleanroom laundered to minimize fiber and particle release
  - High absorbency capacity
  - 5mm thickness provides cushioned surface for optimum conformance to uneven floors, walls and ceilings
  - Each cover is individually wrapped
- \*Autoclavable

SKU	SIZE	COVERS/ PACK	PACKS/ CASE
FMC7LF20	10 X 18" (25 X 46cm)	4	20

## CLEANROOM FLAT MOP WIPERS

All the wipers are disposable and measured to fit the Mop Head Frame. More than one wiper can be attached to the mop head at a time. After mopping the area, the outer wiper can be disposed of and the remaining wipers are ready for the next mopping phase. This guarantees a fresh wiper is used for each new phase.



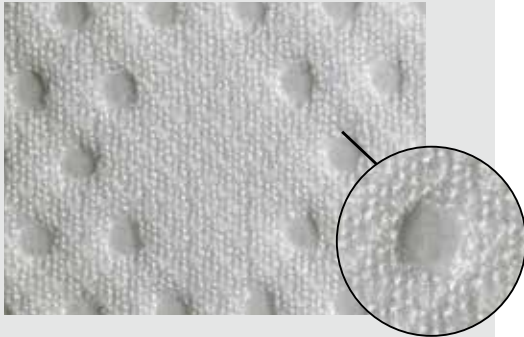
**LARGE  
W/SPRINGS**



**LARGE  
W/PLASTIC EYES**



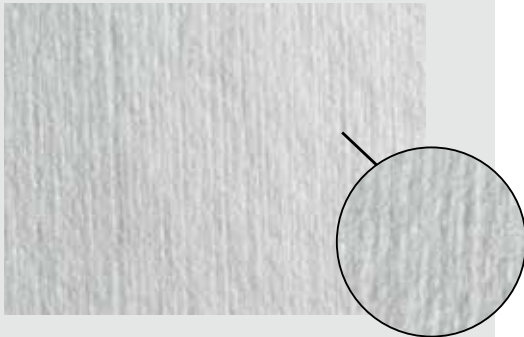
**SMALL  
W/PLASTIC EYES**



### MicroSeal SuperSorb® Flat Mop Wiper

- Two-ply bonded, sealed edge 100% polyester
- Laundered and packaged in an ISO Class 4 (Class 10) cleanroom
- High Abrasion Resistance
- Autoclavable/sterile version available
- Lot number of each pack for traceability

SKU	SIZE	SHEETS/ PACK	PACKS/ CASE
MSSS.0812.12	8 X 12" (20 X 30cm)	50	12
MSSS.0824.12	8 X 24" (20 X 61cm)	25	12



### Durx® 670 Flat Mop Wiper

- Hydroentangled 55% cellulose/ 45% polyester
- Smooth, highly sorbent and durable
- Autoclavable/sterile versions available
- No secondary binder
- Critical combination of the strength of synthetic polyester with the absorbency of cellulose
- Lot number of each pack for traceability

SKU	SIZE	SHEETS/ PACK	PACKS/ CASE
DR670.0812.20	8 X 12" (20 X 30cm)	100	20
DR670.0824.10	8 X 24" (20 X 61cm)	100	10

## BCR® FLAT MOP SYSTEM

### Flat Mop Head Frame

Efficient cleaning of floors, wall and other large surfaces is critical to the overall cleanliness of the production environment. BCR® Flat Mop Systems replicate the most effective way to clean a surface - WIPING. Available with a range of wiping substrates to support your level of cleanliness.

#### Features

- Clean, light and durable
- High quality anodized aluminum
- Autoclavable
- Unique stainless steel spring mechanisms for wiper attachment (Mop 2)
- Plastic eyes for wiper attachment (Mop 3 and 4)

PRODUCT	SKU	SIZE	QUANTITY
BCR® LARGE MOP HEAD FRAME W/SPRINGS	BCR.MOP2.1	3 1/2 X 23" (9 X 58cm)	1 PER CASE
BCR® LARGE MOP HEAD FRAME W/SPRINGS	BCR.MOP2.10	3 1/2 X 23" (9 X 58cm)	10 PER CASE
BCR® SMALL MOP HEAD FRAME W/PLASTIC EYES	BCR.MOP3.1	3 1/2 X 11" (9 X 28cm)	1 PER CASE
BCR® SMALL MOP HEAD FRAME W/PLASTIC EYES	BCR.MOP3.10	3 1/2 X 11" (9 X 28cm)	10 PER CASE
BCR® LARGE MOP HEAD FRAME W/PLASTIC EYES	BCR.MOP4.1	3 1/2 X 23" (9 X 58cm)	1 PER CASE
BCR® LARGE MOP HEAD FRAME W/PLASTIC EYES	BCR.MOP4.10	3 1/2 X 23" (9 X 58cm)	10 PER CASE

### Flat Mop Handle

#### Features

- Telescopic handle: extends from 37-71" (95-180cm)
- Anodized aluminum; lightweight and strong
- Autoclavable

PRODUCT	SKU	SIZE	QUANTITY
TELESCOPING ALUMINUM HANDLE	BCR.T2HANDLE.1	37-71" (95-180cm)	1 PER CASE
TELESCOPING ALUMINUM HANDLE	BCR.T2HANDLE.10	37-71" (95-180cm)	10 PER CASE





CONTAMINATION CONTROL PRODUCT CATALOG