

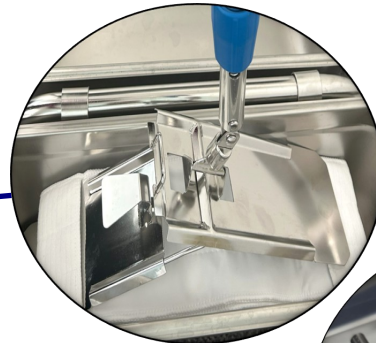
## BCR® Stainless Steel Mop Cart System

Mop cart system is an essential equipment for maintaining cleanliness and preventing contamination in a sterile and non-sterile cleanroom and controlled environments. It is dedicated for cleaning and disinfecting small and large surfaces, ensuring efficient cleaning and minimizing the risk of cross-contamination. All pharmaceutical manufacturing, biotech & medical-device, healthcare facilities and sterile drugs compounding areas, food processing uses it to control microbial contamination in their facilities.

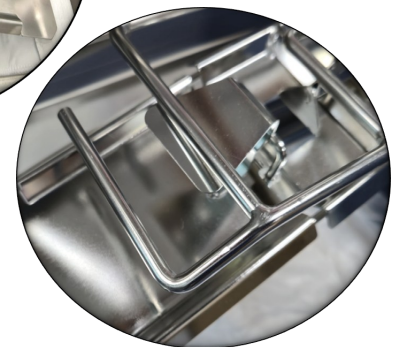
### BCR® Stainless Steel Mop Cart System

prioritizes user convenience. Constructed from durable, corrosion resistant stainless steel, it is ideal for high-traffic areas and environments where sanitation is essential. The touchless loading and unloading of mop cover system, reduces the risk of contamination by minimizing direct hand contact with cleaning solutions and contaminated surfaces.

Its' versatile compact design facilitates easy setup and maneuvers effortlessly into tight spaces.



Touchless loading & unloading of mop cover system



### Features & Benefits

- ✓ Touchless loading and unloading of mop cover system to prevent cross contamination.
- ✓ 360-degree swivel mop head with lock & unlock mechanism for better cleaning maneuvering control.
- ✓ Compact and offer flexible multi-bucket configuration systems.
- ✓ Versatile system & design for floor, wall and ceiling cleaning.
- ✓ Entire systems including castors are fully autoclavable (recommended 121° C for 30 minutes).
- ✓ Durable and disinfectants resistance.
- ✓ Modular design for autoclaving and easy storage.
- ✓ Ease of setting up and disassemble.



BCR Stainless Steel Mop Cart System is versatile and can be configured into a **3-bucket, 2-bucket and 1 bucket mop system** to meet all your cleaning tasks and requirements. Adopt the correct system setting, follow proper cleaning techniques, so to achieve the highest level of cleaning efficiency.



### 3-bucket mop system

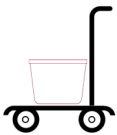
Uses three buckets: one for the cleaning solution, one for rinsing, and a third for rinsing again, minimizing cross-contamination and improving the cleaning process. This system is where maintaining the highest level of cleanliness is critical. Recommended for EU GMP Grade A and B, as well as C areas containing isolators.



### 2-bucket mop system

Uses two buckets method 1: one for clean cleaning solution and another for dirty water or rinsing. Prevents the re-introduction of dirt into the clean solution that contaminates or weakening the cleaning agent.

Uses two buckets method 2: one for storing the prewetted mop covers and the other for used mop covers.



### 1-bucket mop system

Uses a single bucket to hold both the cleaning solution and the rinsing water for mopping, often with a mop press plate/wringer to remove excess water from the mop. For non-GMP standard of cleanliness.

## BCR® Stainless Steel Mop Cart System includes:

Parts Information	SKU	Description
Cart Main Frame	BCRSSMOPSET	It comes with 3 parts of body frame, 2 casters w brakes & 2 caster w/o brakes. Stainless steel
Bucket 22L		1 Piece, stainless steel
Bucket 7L		2 Pieces, stainless steel
**Mop Press Plate		1 Piece, stainless steel
Mop Jump		1 Piece, stainless steel

\*\*For higher cleaning efficiency, a down press wringer can be used instead.

## Optional Accessories:

Parts Information	SKU	Description
Dosage Sieve	BCRSSDSIEVE	Stainless steel
Wringer (Down press)	BCRSSWRINGER	Stainless steel
Folding Mop Head & Mop Handle (Telescopic)	BCRTSFMSET	360-degree swivel mop head, 40x11cm, stainless steel head & aluminium rod with polyamide twist knob, 78 to 150cm.
Folding Mop Head & Mop Handle (Fixed)	BCRDFMSET	360-degree swivel mop head, 40x11cm, stainless steel head & 142cm stainless steel rod.

**Wringer**  
(Down press)

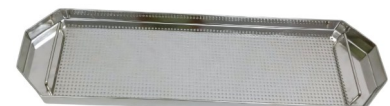


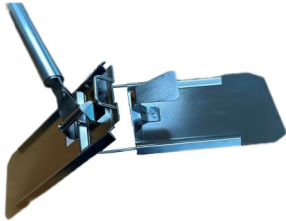
**Mop Press Plate**



**Dosage Sieve**

- for distributing solvent evenly on mop covers.





### Cleanroom Mop Head & Handles

#### Folding Mop Head

- 40 x 11 cm c/w hands-free lock & release jaw (stainless steel)
- 360° swivel head for reaching every corners during mopping
- Swivel neck can be locked when cleaning walls and ceilings.
- Ergonomic lock & release lever V-shape jaw design for slipping on the mop cover and discarding effortlessly while standing upright. No touching of soiled mops when discarding to minimise cross contamination

#### Fixed Handle

#### Telescopic Handle

- Fixed handle (stainless steel) length: 142cm
- Telescopic handle length (Aluminium rod with polyamide knob) : 78cm to 150cm
- Detachable from the mophead
- Swivel neck can be locked when cleaning walls and ceilings.

### Cleanroom Mop Covers Selection

The mop covers, available in various selection of material composite for both disposable and re-laundable, allow the mop head. to conform to the surface being cleaned, ensures thorough particle and contaminant removal even on

#### Flat Mop Cover MF - microfiber (SKU: FCMCF24)

- Made with 100% knitted microfiber polyester outer layer and multiple 100% nonwoven polyester inner layers to provide superior absorbency and cleanliness
- All edges are over-edge stitched for reinforcement and to prevent fiber shedding
- Excellent absorbency capacity (>3x weight of mop cover) improves overall cleaning efficiency
- The microfiber mop surface provides higher efficiency removal of contaminants during the cleaning process
- Use with Berkshire's Flat Mop Head or can be used with alternative flat mops
- Autoclavable (recommended 121°C for 30min)
- Gamma irradiated version (SKU: FCMCF24IR) is available

#### \*\*Technical Data:

Attribute		Units	Value	Test Method
Basis Weight		g/mop	55	Not applicable
Sorbency	Capacity	mL/mop	209	IEST-RP-CC004.4 Sec 9.1 modified
Efficiency	Capacity	mL/mop	3.8	IEST-RP-CC004.4 Sec 9.1 modified

#### Flat Mop Cover PET - polyester (SKU: FMCPET20)

- Superior absorbency and cleanliness
- All edges are bound for reinforcement, durability and extremely low fibre shedding
- Designed for the capture and removal of contaminants during the cleaning process with high tear strength
- Excellent absorbency capacity (>3x weight of mop cover) improves overall cleaning efficiency
- The smooth knitted polyester mop surface provides excellent dispersal of disinfectant
- Use with Berkshire's Flat Mop Head or can be used with alternative flat mops
- Autoclavable (recommended 121°C for 30min)
- Gamma irradiated version (SKU: FMCPET20IR) is available.

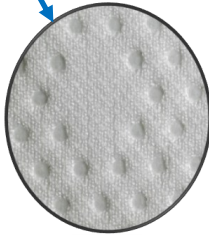
#### \*\*Technical Data:

Attribute		Units	Value	Test Method
Basis Weight		g/mop	64	Not applicable
Sorbency	Capacity	mL/mop	216	IEST-RP-CC004.4 Sec 9.1 modified
Efficiency	Capacity	mL/mop	3.4	IEST-RP-CC004.4 Sec 9.1 modified





Berkshire cleanroom fabric with unique pinsonic diamond pattern design, adds surface texture that aids in stubborn residue removal.



### Flat Mop Cover CHOICE® SuperSorb (SKU: FMCCHSSXX)

- Made from our Choice® SuperSorb fabric that comprises of 100% continuous filament knit polyester, a two-ply pinsonic construction with a unique diamond pattern.
- Its unique pinsonic design adds surface texture that aids in stubborn residue removal.
- Cleanroom laundered and packaged with:
- Critically low particles, fibers, ions and extractables.
- Smooth gliding and abrasion resistance on surfaces.
- Chemically compatible with IPA, Acetone and other solvents.
- Excellent absorbency capacity (>3x weight of mop cover) improves overall cleaning efficiency
- Autoclavable (Recommended 121°C for 30 mins).
- Use with Berkshire's Flat Mop Head or can be used with alternative flat mops.
- For critical cleanrooms cleaning and disinfecting.

#### \*\*Technical Data:

Attribute		Units	Value	Test Method
Weight		g/mop	60	Not applicable
Sorbency	Capacity	mL/m	195	IEST-RP-CC004.4 Sec 9.1 modified
Efficiency	Capacity	mL/g	3.3	IEST-RP-CC004.4 Sec 9.1 modified
Fibers	>100µm	fibers/cm <sup>2</sup>	0.06	IEST-RP.CC004.4, Sec 7.1.3 / Sec 7.2.2
Particles	>0.5µm	x10 <sup>3</sup> /cm <sup>2</sup>	1.8	IEST-RP.CC004.4, Sec 7.1.3 / Sec 7.2.2

\*\* All values are statistical averages.

\*\* Due to differences in test methods applied and equipment utilized by different wiper manufacturers,

valid product comparisons may only be obtained through side-by-side testing in the same test facility, under similar conditions.

\*\* Third party testing can be performed upon request.

#### Order Information

Product	Number	Size	Pc/pk	Pks/cs	Style
Mop set c/w cart main frame, bucket 22L, bucket 7L, Mop press plate & mop jump	BCRSSMOPSET	70cm x 90cm x 54cm	—	1 Set	
Dosage Sieve	BCRSSDSIEVE	50cm x 14cm x 3cm	1	1	
Wringer (Down press)	BCRSSWRINGER	48cm x18cm x 29cm & 53cm Handle	1	1	
BCR® Flat Mop System – Fixed	BCRFDFMSET	40cm x 10cm Mophead & 142cm Handle	1	1	-
BCR® Flat Mop System – Telescopic	BCRTSFMSET	40cm x 10cm Mophead & 78+80cm Telescopic Handle	1	1	-
Flat Mop Cover MF	FMCMF24	40cm x 12 cm	5	24	Stacked
Flat Mop Cover MF - Irradiated	FMCMF24IR	40cm x 12 cm	5	24	Stacked
Flat Mop Cover PET	FMCJET20	40cm x 12cm	5	20	Stacked
Flat Mop Cover PET - Irradiated	FMCJET20IR	40cm x 12 cm	5	20	Stacked
Flat Mop Cover CHSS	FMCCHSS10	39cm x 13cm	8	10	Stacked
Flat Mop Cover CHSS - Irradiated	FMCCHSS10IR	39cm x 13cm	8	10	Stacked

[www.berkshire.com](http://www.berkshire.com)

Contact: Tel 65 6252 4313

Email: [enquiries@berkshire.com.sg](mailto:enquiries@berkshire.com.sg)



Americas	Tel 1 413 528 2602	Fax 1 413 528 2614	<a href="mailto:usa@berkshire.com">usa@berkshire.com</a>
Europe	Tel 44 (0) 870 757 2877	Fax 44 (0) 870 757 2878	<a href="mailto:enquiries@berkshire.uk.com">enquiries@berkshire.uk.com</a>
SE Asia	Tel 65 6252 4313	Fax 65 6252 4312	<a href="mailto:enquiries@berkshire.com.sg">enquiries@berkshire.com.sg</a>
Japan	Tel 81 45 477 4481	Fax 81 45 477 4484	<a href="mailto:master@berkshire.co.jp">master@berkshire.co.jp</a>